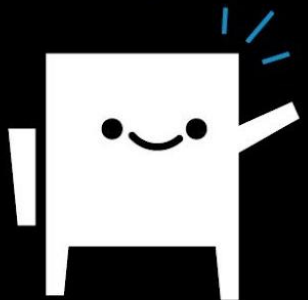


# Language Café - info

Autumn semester 2024

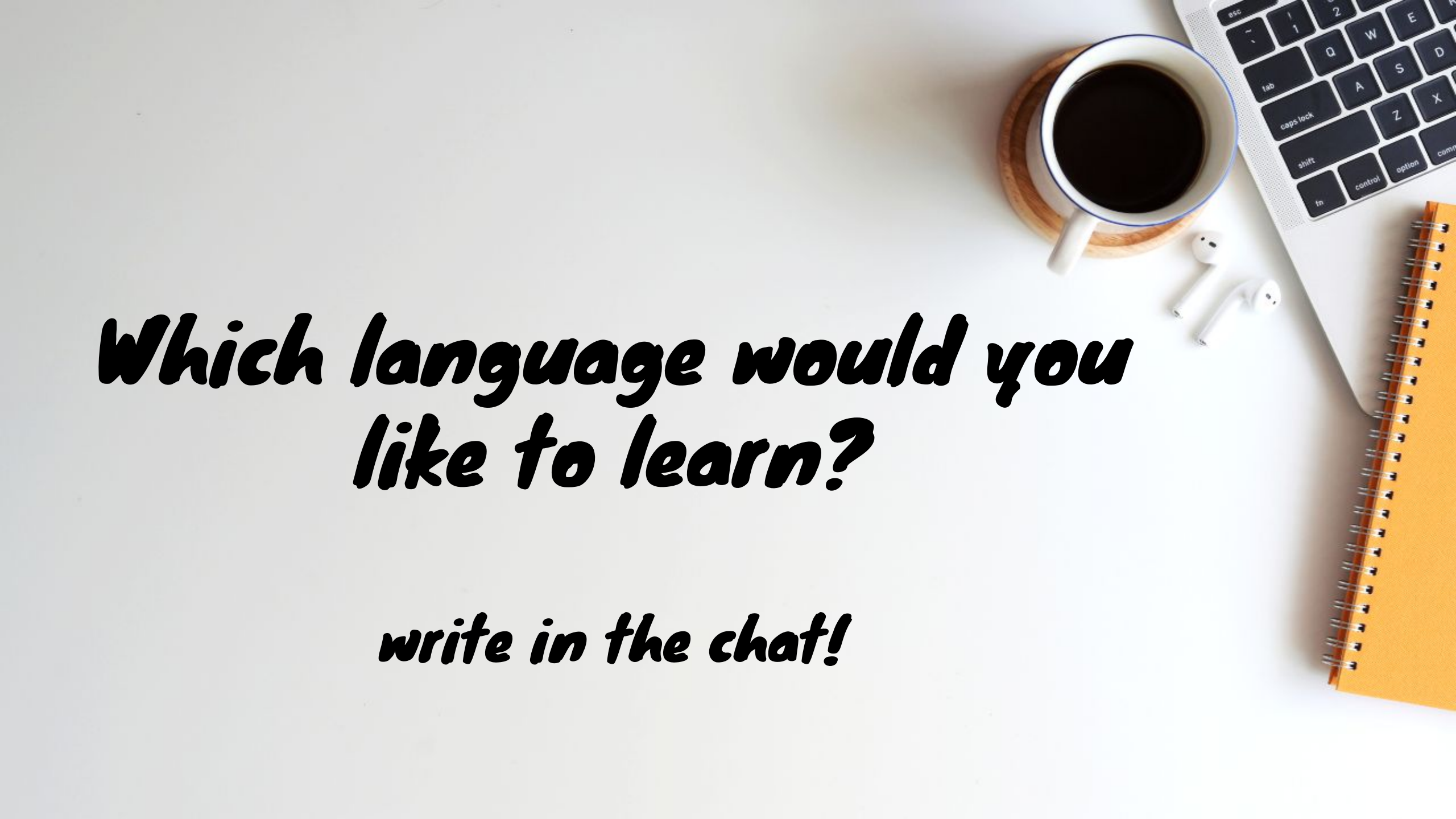
Elina Pitkänen & Salla Haapavaara  
Coordinators of International Affairs



# *Contents*

- What is a Language Café?
- How it works?
- How to earn ECTS points?
- Signing up



A top-down view of a desk with a laptop, a cup of coffee, earbuds, and a notebook. The laptop is silver and partially visible on the right side. A white cup with a blue rim is filled with black coffee and sits on a wooden coaster. A pair of white earbuds lies on the desk next to the cup. An orange spiral notebook is visible in the bottom right corner.


***Which language would you  
like to learn?***

***write in the chat!***

# ***What is a Language Café?***

- **It is an informal language class taught by students for students**
- **Gives students an opportunity to**
  - **learn a language they are interested in in a relaxed and friendly environment**
  - **get experience in teaching a language**
- **You can be both a leader and a participant**
- **Possibility to earn ECTS credits by teaching or participating (UEF students)**
  - **NOTE! If the teacher does not want ECTS credits, there is no possibility for a participant to get them either**
- **You can attend the Language Cafés even if you don't want to earn ECTS credits - so it's just for fun!**

# *How to become a Language Café leader*

1. Participate in Leader Training which is held today **Wed 18.9. at 9.15 am** (online)
    - Leader Training is mandatory for all leaders, but attending the training does not bind you to anything!
    - If you cannot make it to the training session, watch it later on Moodle
  2. After the Leader Training, you have until **Sun 22.9.** to make the final decision if you want to teach a Language Café or not
  3. Participants can join your Language Café by filling in a sign-up form on ISYY's website **Mon 23.9. - Sun 29.9.**
    - Participants' email addresses are forwarded to the Language Café leader **on Mon 30.9.** - now you can start to plan the first meeting with your students!
- 

# *How to become a Language Café participant*

- Available Language Cafés will be added to ISYY's website on Mon **23 September**
  - <https://www.isyy.fi/en/recreation/language-cafes-2.html>
- Join the Language Café(s) of your choice by filling in a sign-up form on ISYY's website **by Sun 29 September**
  - You can join as many Language Cafés as you wish!



# *How do the Cafés work?*

- Normally meetings once a week
  - Time and day decided by each individual Language Café
- First meeting = planning meeting
- Themes of the cafés are decided together with the participants and the leader
- Content is created by the leader based on participants' wishes. NB! There is no ready-made material for teachers
- ISYY offers **25 €/ leader** so that leaders can organise e.g. a baking lesson (only the Cafés that offer ECTS credits)





A top-down view of a desk with a laptop, a cup of coffee, earbuds, and a notebook. The laptop is silver and partially visible in the top right corner. The coffee cup is white with a blue rim and sits on a wooden coaster. A pair of white earbuds lies on the desk next to the cup. An orange spiral notebook is visible in the bottom right corner.

***HOW TO EARN ECTS CREDITS?***

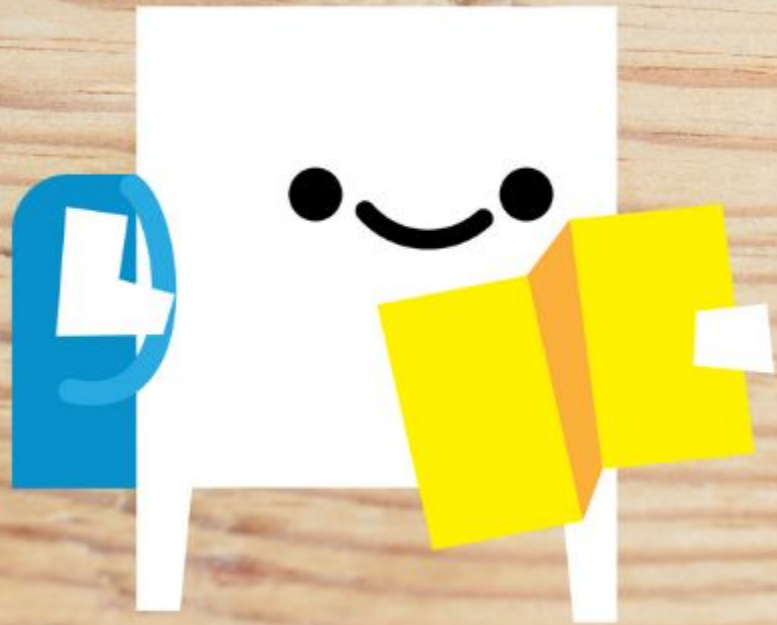


# ***Two Language Café Courses in eLearn Moodle***

- **Language Cafe Participant**
- Moodle course key: **PART-2024**
- Peppi: 8015309 Language Cafe, participant
- 1 ECTS (UEF students only)
  
- **Language Cafe Leader**
- Moodle course key: **LEADER-2024**
- Peppi: 1131019 Language Cafe, leader
- 2 ECTS (UEF students only)







*Participants*

# ***8015309 Language Cafe, participant, 1 ECTS***

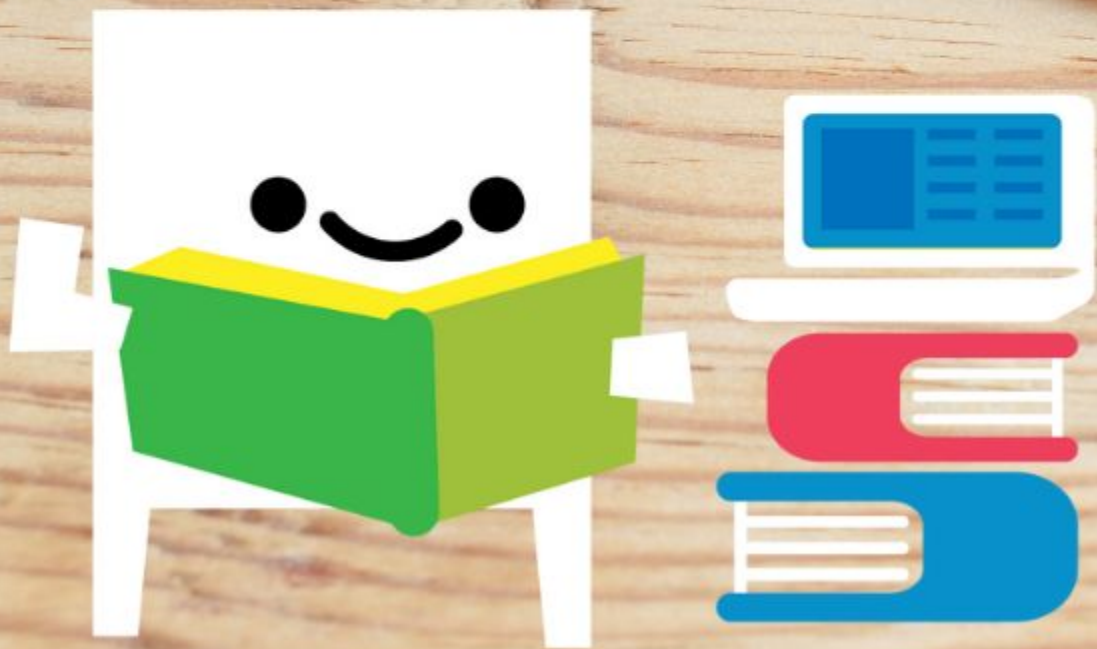
- **Aim:** when participating in international Language Cafe activities, the student
  - develops their language skills together with other participants in line with a self-defined starting point and goals
  - learns about different cultures and customs
  - acquires skills in performing within a multicultural group
- **Content:** the Language Café leader prepares the course themes together with the participants
- **Evaluation criteria:** pass-fail
- **Time estimate for the credit:**
  - 20 hours of attending Language Café meetings
  - 7 hours of independent study and writing a learning diary
- **NOTE!** Submitting the required assignments is done via elearn Moodle platform.

# ***Requirements for 1 ECTS credit:***

- ❑ Participate in the Language Café meetings (20 h), 80% attendance requirement (min 16 h)**
- ❑ Submit personal learning objectives **by 13.10.****
- ❑ Write and submit a learning diary (2 pages) **by 15.12.****

**Remember to sign up to all Language Cafés you want to participate in!**





***Leaders***

# ***1131019 Language Cafe, leader, 2 ECTS***

- **Aim:** to learn about
  - international language cafe activities
  - peer learning and teaching
  - how to take responsibility for leading, planning and coordinating language cafe activities
  - developing multicultural group work skills
- **Evaluation criteria:** pass-fail
- **Content:**
  - The Language Café leader decides the meetings' themes together with the participants
  - The leader creates the content based on the wishes of the participants and based on the participants' learning objectives (discussed in the first meeting)



# ***1131019 Language Cafe, leader, 2 ECTS***

- **Time estimate:**
  - 20 hours of planning the meetings, preparing content and communications
  - 20 hours of leading Language Café meetings
  - 14 hours for assignments
- **NOTE! Submitting assignments is carried out via the eLearn Moodle course.**

# ***Requirements for 2 ECTS credits:***

- ❑ **Participate in Leader Training today **18.9. at 9.15 am****
- ❑ **Email International Coordinators to confirm being a leader by **22.9.****
  - kv.joensuu(at)isyy.fi & kv.kuopio(at)isyy.fi
- ❑ **Submit a course plan by **13.10.****
- ❑ **Plan Language Café activities**
- ❑ **Teach 20h**
- ❑ **Submit participants' attendance record and ECTS grant form by **31.12.****
- ❑ **Write and submit your own learning diary (2 pages) by **31.12.****

# ***Learning Diary***


- **Helps you to become more conscious of your learning – what you have learnt and how you have progressed.**
- **It is a "learning tool". Reflects on significant experiences associated with your learning – what was particularly interesting/motivating/relevant/confusing/difficult, etc.? Develops your argumentation skills.**  
(source: <https://www.uef.fi/web/resourceslaw/study-methods>)
- **A learning diary should not be a copy of the course plan or the personal learning objectives**



# ***Learning Diary***

**A suitable length for a learning diary is two (2) full pages of your own text with 1.5 line spacing and 12 pt font.**

**Please use the following list as a basis for your learning diary:**

- 1) Your name and study right number**
  - 2) Language Café you participated in/Language Café you taught**
  - 3) Language Café period**
  - 4) Your expectations for the Language Café and how they were fulfilled**
  - 5) The content and activities of the Language Café**
  - 6) The essential learning experiences**
    - a) What (new) did you learn?**
    - b) Which of it was useful and which not so useful?**
    - c) What kind of observations did you make of yourself as a learner/teacher and how did your learning/teaching/language skills improve?**
  - 7) Feedback**
- 

# **REMEMBER**

- **Sign up in Moodle if you want credits!**
- **NB! You can only get ECTS points if you are a UEF student**
- **You can only get the ECTS points once, i.e. if you got 2 ECTS for leading a Café last semester you can not get another 2 ECTS this semester for leading another Language Café**





***HOW TO SIGN UP?***





# *Sign up as a leader*

- **Leader training is mandatory for all Language Café leaders!**
- **Attending the Leader Training does not bind you into anything.**
- **You have until this **Sunday 22 September** to decide whether you want to organise a Café or not.**
  - **send an email to ISYY's International Coordinators**  
**kv.joensuu@isyy.fi & kv.kuopio@isyy.fi**

# Sign up as a *participant*

The available Language Cafés and their sign-up form will be posted [on our webpage](#) on Mon 23.9.

- In order to join a Language Café, you need to fill in the sign-up form **by Sun 29.9. midnight**
- You can join as many Language Cafés as you want!
- Your email will be forwarded to the Language Café leader, and they will contact you about the first meeting

## Deadlines for leaders

- **22.9.** Email to confirm being a leader
- **13.10.** Course plan
- **31.12.** Learning diary, attendance records and ECTS grant form

## Deadlines for students

- **23.9.-29.9.** Sign up to Language Café (s)
- **13.10.** Student's personal learning objectives
- **15.12.** Learning diaries

## Course keys to enroll to Moodle courses:

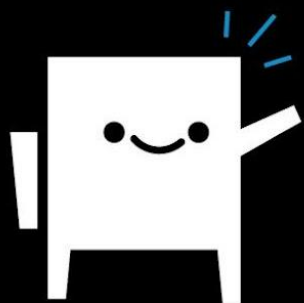
- Leaders: **LEADER-2024**
- Participants: **PART-2024**
- Instructions, presentations and forms
- All assignments submitted via Moodle

# Questions?

- **All the instructions are in Moodle!**
- **If the information you require wasn't in Moodle, you can contact either of the International Coordinators by email:**
  - [kv.kuopio@isyy.fi](mailto:kv.kuopio@isyy.fi)
  - [kv.joensuu@isyy.fi](mailto:kv.joensuu@isyy.fi)
- **Participants ECTS questions:**
  - Irene Hall, [ihall@uef.fi](mailto:ihall@uef.fi)
- **Leaders ECTS questions:**
  - [kv.joensuu@isyy.fi](mailto:kv.joensuu@isyy.fi) or [kv.kuopio@isyy.fi](mailto:kv.kuopio@isyy.fi)



**SEURAA  
& OTA  
YHTEYTTÄ**



**www.isyy.fi**



**fbISYY**



**@ISYYH**



**@isyyuef**



**Itä-Suomen  
yliopiston  
ylioppilaskunta  
(ISYY)**

**Viikko-Ärsyke** (kampuskohtainen uutiskirje)

**ISYYn toimistot** (yhteystiedot nettisivuilla)